

The Idea

When i got the assignment i started reading up on what a hut is.

In the start of the wikipedia page they stat that” A hut is a primitive dwelling, which may be constructed of various local materials. Huts are a type of vernacular architecture because they are built of readily available materials such as wood, snow, ice, stone, grass, palm leaves, branches, hides, fabric, or mud using techniques passed down through the generations.

A hut is a shape of a lower quality than a house (durable, well built dwelling) but higher quality than a shelter (place of refuge or safety) such as a tent and is used as temporary or seasonal shelter or in primitive societies as a permanent dwelling.” this is something that i think captures what a hut is. I got stuck on the word **SNOW** because it was a lot of snow out and there was more than 1m of snow at my grandmother’s house and i thought that i could build a hut up there. I also realised that i as an architect can not build a hut but i can design a homage to what i believe a hut is. So i sat down to see what type of huts are out there and what you realise is that there are two designs that you come across multiple cultures and that is the Tipi or Kâta or the parabola structure where the latter is the most prolific structure.

So i decided that i was going with the parabola and hence if i was going for the snow structure a **igloo**.

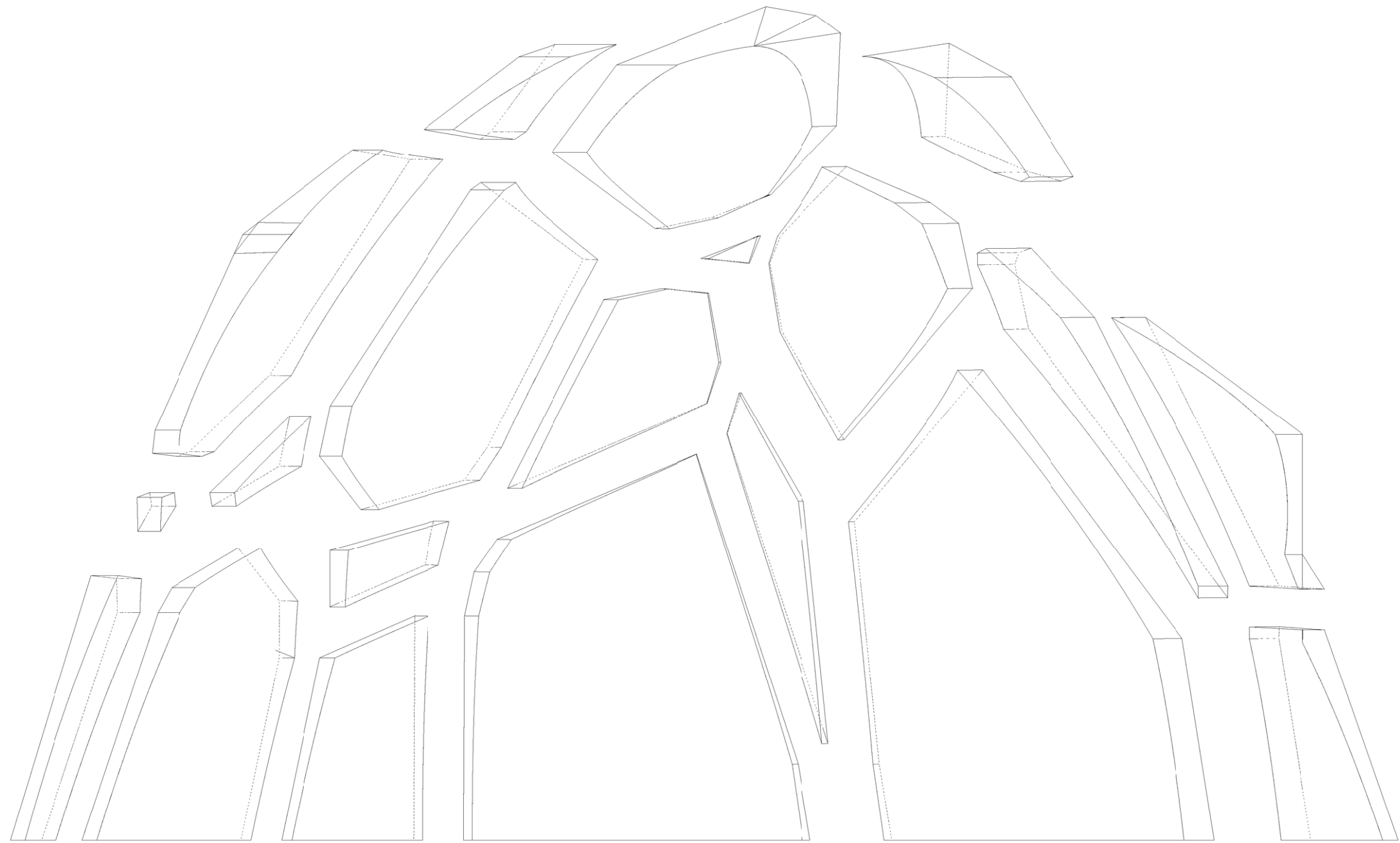


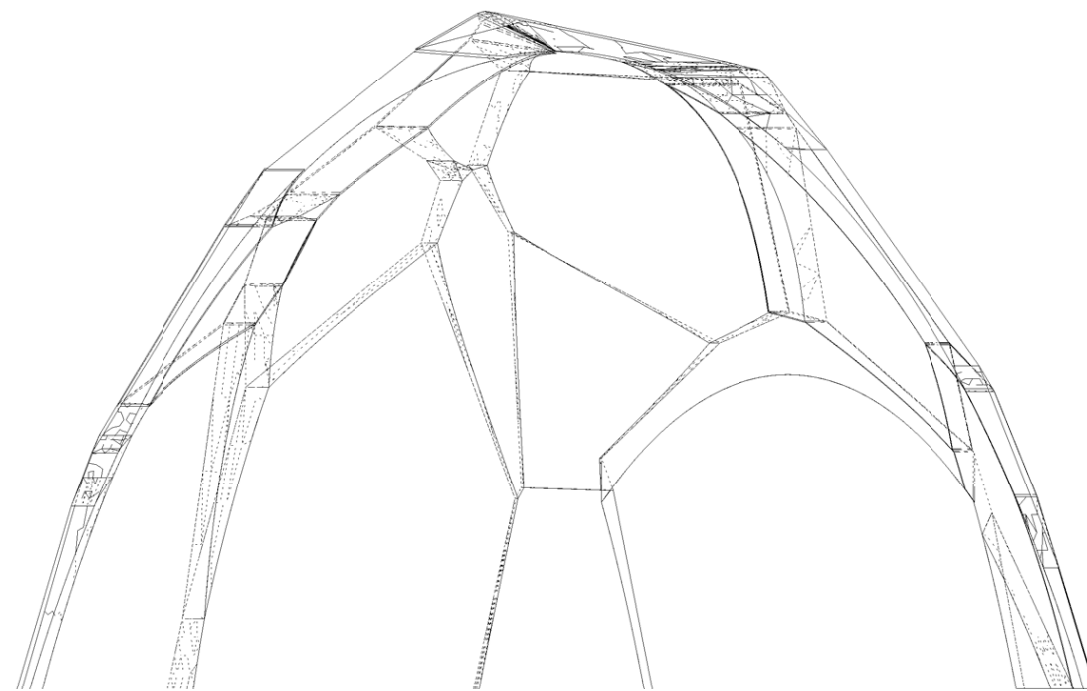
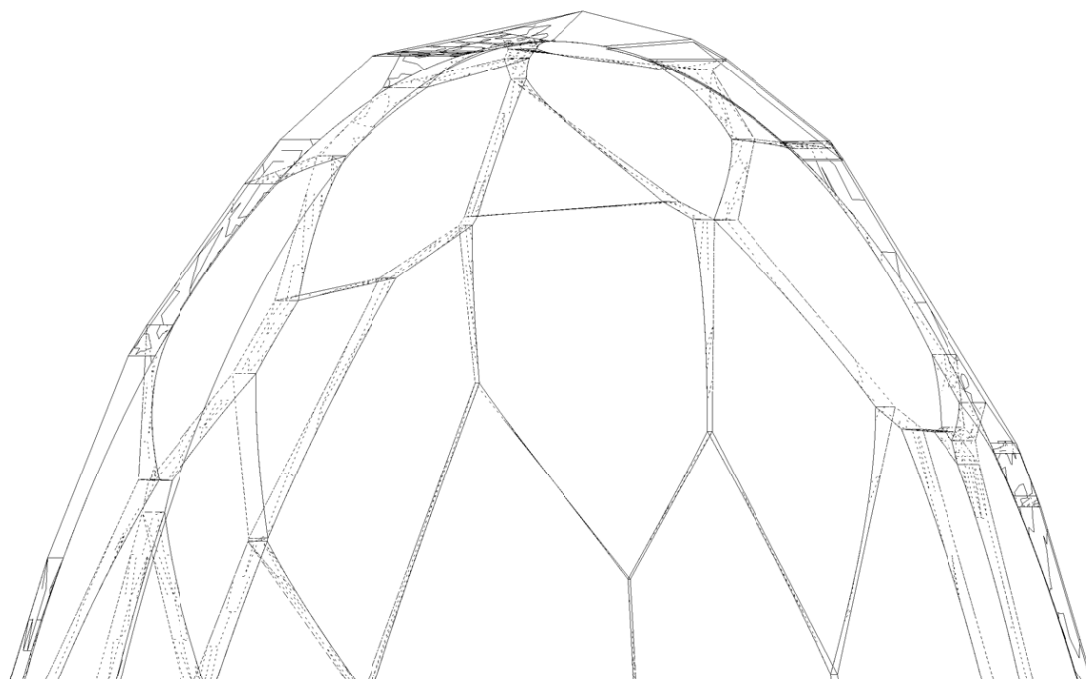
Procces

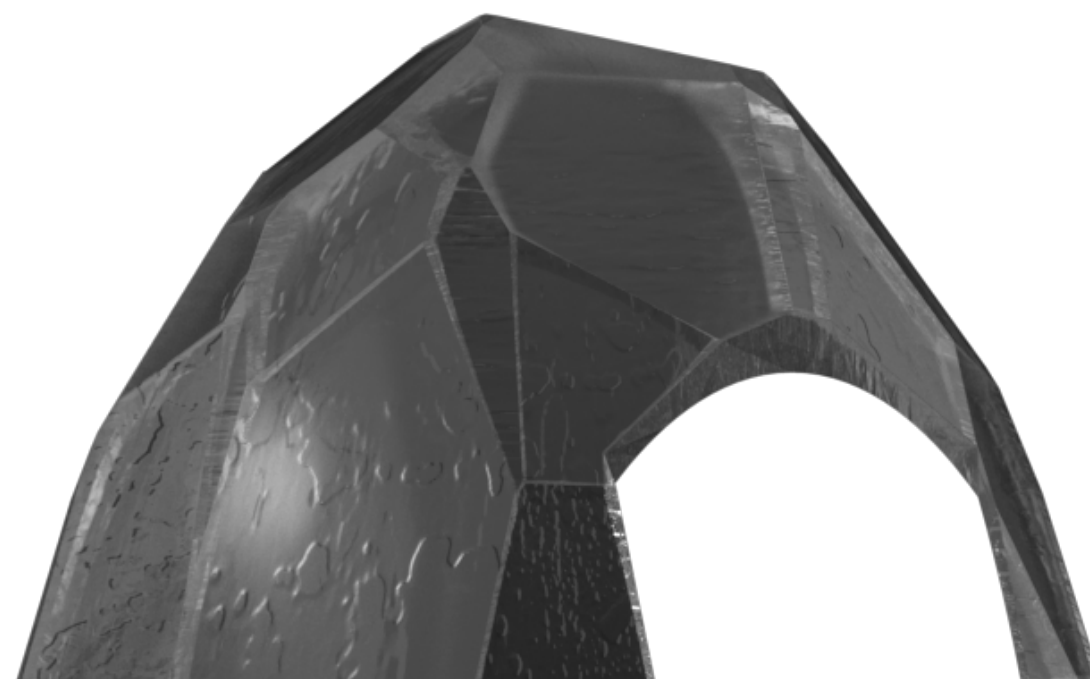
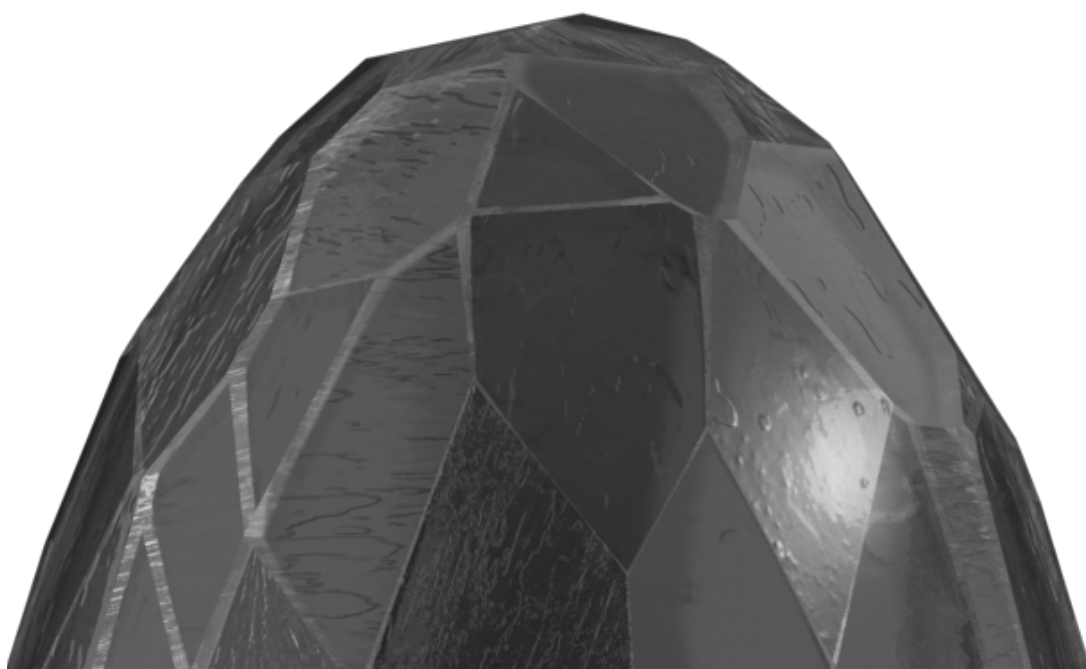
So when the idea whas set then i needed to to work whit the **parabolic** snow or ice monster.

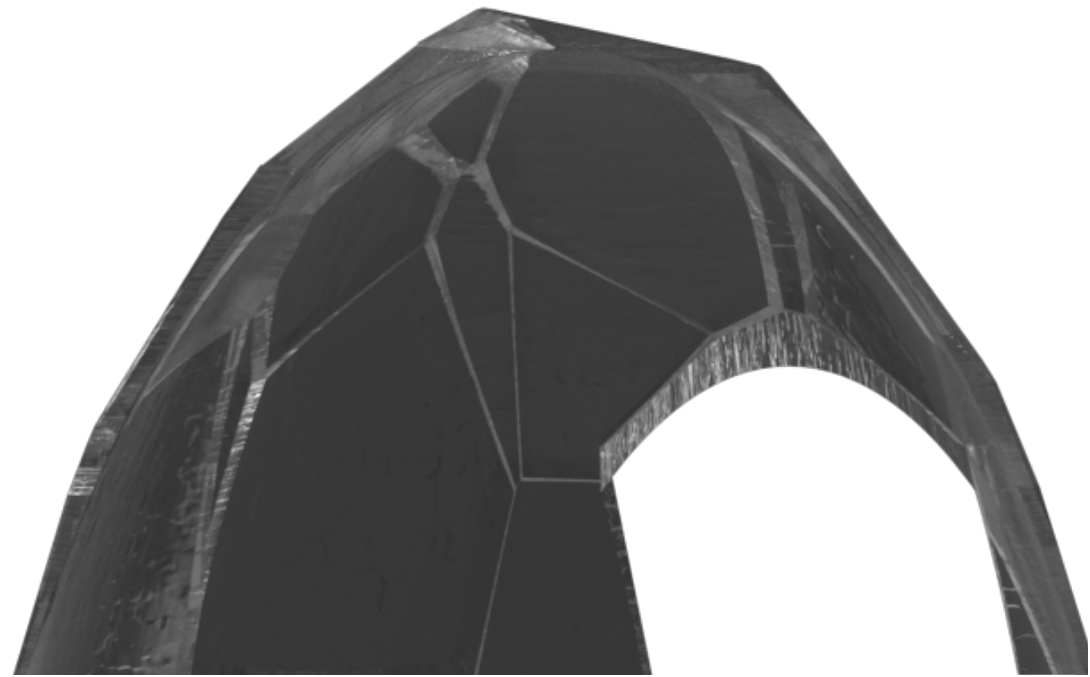
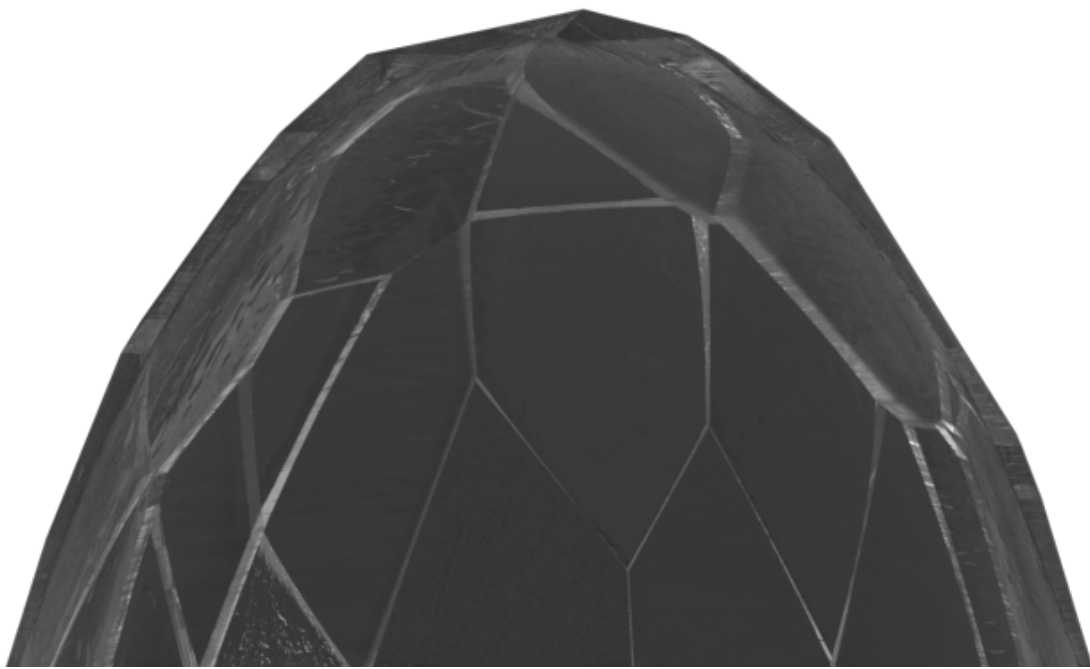
I startet whit the igloo and the premis of the hut. The premise is a easy way to build a shelter with no or just **rudimentary tools** a aspect i really wanted to keep. The hut also in my mind especially a igloo is its closeness with nature and with this aspect i decided to go with the opposite to emphasise the structure and contrast the “natural” hut with the “**homage**” hut.

Something that never exist in nature are **sharp edges** except in cristalin strukturs. This was something i wanted to work with a multi faceted parabola with a sharp edges on the outside and smoothe on the inside. So i whnt about sketching up som ideas of sharp edges and found that if i created a grasshopper script that randomly generated points on the body and then from the normal of that point make a cutting plane with som different deeps to generate different sizes of surface facets. Now for the construction how to build it how should the joint look like. I got an idea from my source and that is that the parabola is a self supporting structure and if the cuts of the facets are **perpendicular** to the gravity on the upper and lower part of the facet then you don't need a joint.









The End

In the end my struktur is one that i think i can call a true homage to a **hut**. White principals in the design **allows** it to be built whitney material the only permits are the structural integrity of the material to the size of the struktur. And so you do not only need to build it out of snow or ice but also **wood** and clay and you can place it along 17th **meridian** in any material or size.

And anyone can build this struktur but unfortunately you need more than rudimentary tools.



